



Integrating an NVR or Camera Driver into a Control4 Project Product Bulletin

Last updated: 05/19/17

Introduction

All ClareVision IP cameras and NVRs must have the latest firmware (dated August 2014 or newer) in order to support the Control4 integration. All ClareVision NVRs and cameras are internally updated and have the latest firmware. If you experience any issues regarding the ClareVision NVR, camera, or driver please contact Technical Support.

Notes

- This integration supports video only, no other functions/features.
- The Control4 integration supports the 16, 32, and 64 channel NVRs. The 4 (CVP-B4450-01) and 8 (CVP-B8850-02) channel NVRs do not integrate with Control4.
- This integration requires NVR firmware build 081408 or newer. See Figure 1.
- To update the firmware, see *Updating the Firmware of Clare Controls Cameras and NVRs Product Bulletin* (Doc ID 881).
- All ClareVision NVRs must have Virtual Host Enabled. See Figure 2.
- Each NVR supports the quantity of streams that corresponds to the number of channels in the NVR's name. For example, the 16 channel NVR supports 16 streams.
- The second stream of each camera must be set to MJPEG. This must be changed in the camera, it cannot be changed in the NVR.

Figure 1 NVR build of 081408

Basic Information	
Device Name	Embedded Net DVR
Device No.	255
Model	CV-M16810-04
Serial No.	CV-M16810-041620131208BBRR444755414WCVU
Firmware Version	V3.0.1 build 081408
Encoding Version	V1.0 build 130822
Number of Channels	16
Number of HDDs	2
Number of Alarm Input	26
Number of Alarm Output	14

Save

Figure 2 NVR Enable Virtual Host

clarecontrols CV-M16810-04

Live View Playback Log Configuration

Configuration

- Local Configuration
- Remote Configuration
 - Device Parameters
 - Device Information
 - Time Settings
 - Advanced
 - Menu Output
 - Camera Settings
 - Network Settings
 - TCP/IP

Advanced

Alarm Host IP

Alarm Host Port 0

Multicast Address

Enable Virtual Host

Enable Telnet

Save

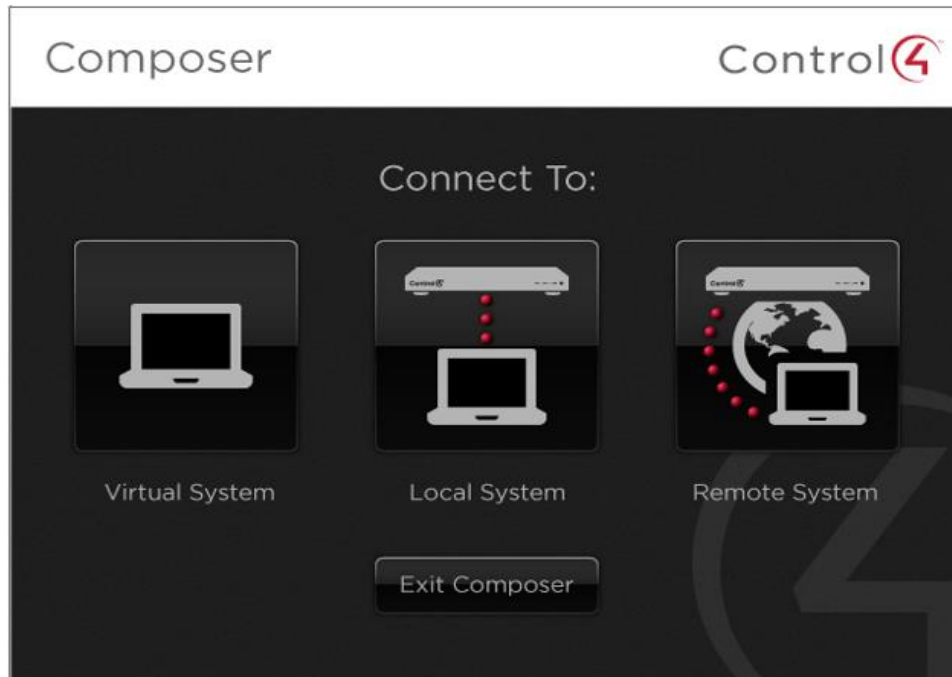
Integrating the ClareVision NVR or camera with Control4

After confirming that you have the latest firmware, integrate the ClareVision NVR or camera with your Control4 project.

Note: The second stream of each camera must be set to MJPEG. This must be changed in the camera, it cannot be changed in the NVR.

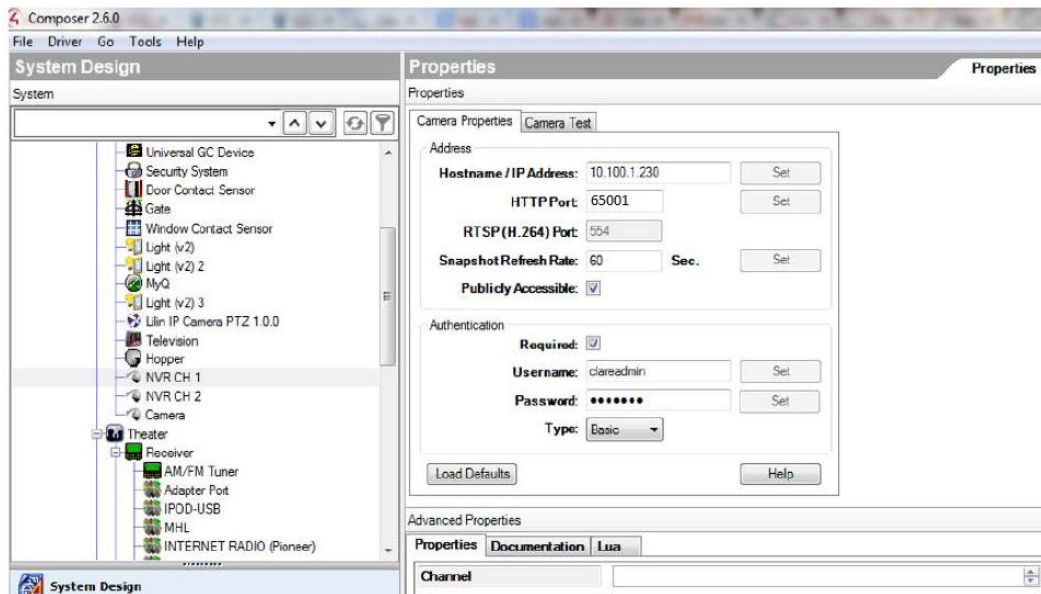
To integrate a ClareVision camera or NVR with Control4:

1. Access the Control4 Composer software.

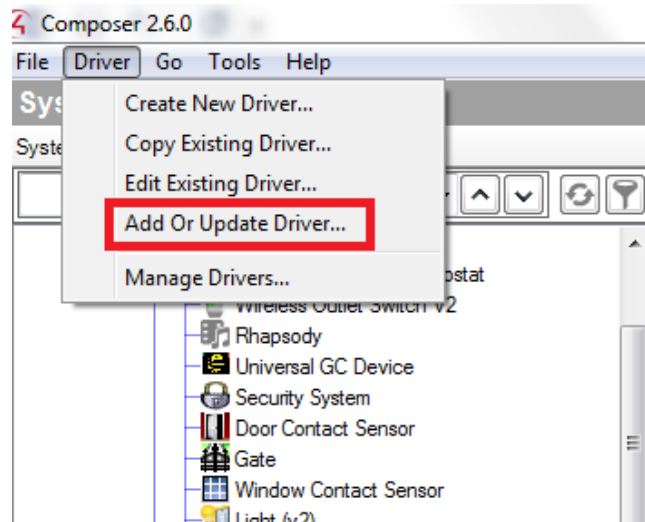


2. Click the **Local System** button.

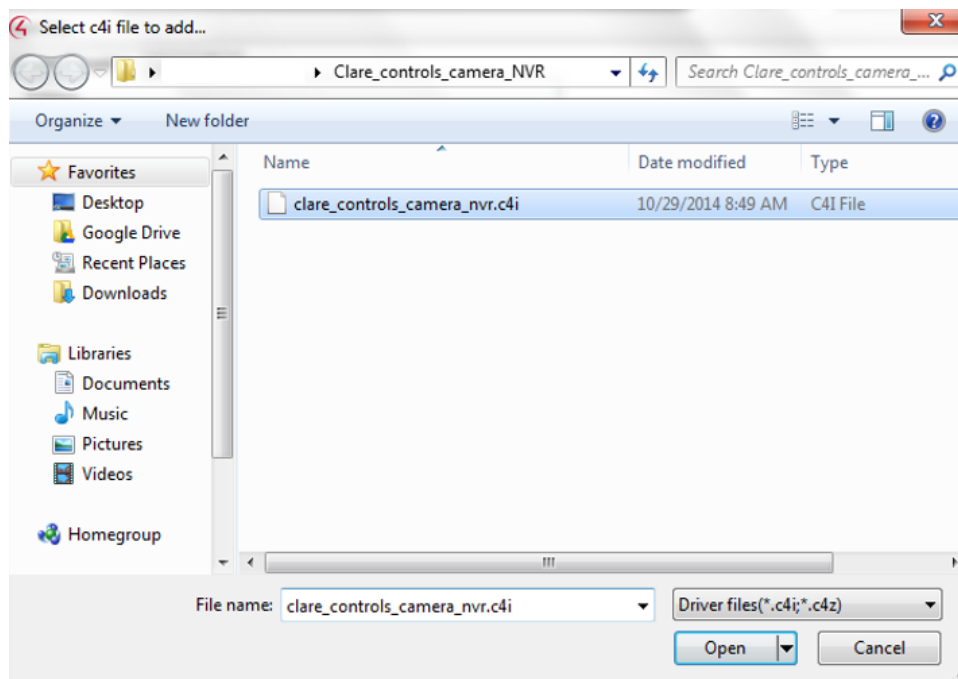
The Control4 Composer home window displays.



3. From the top menu bar, select the **Driver** drop-down. Click **Add or Update Driver**.



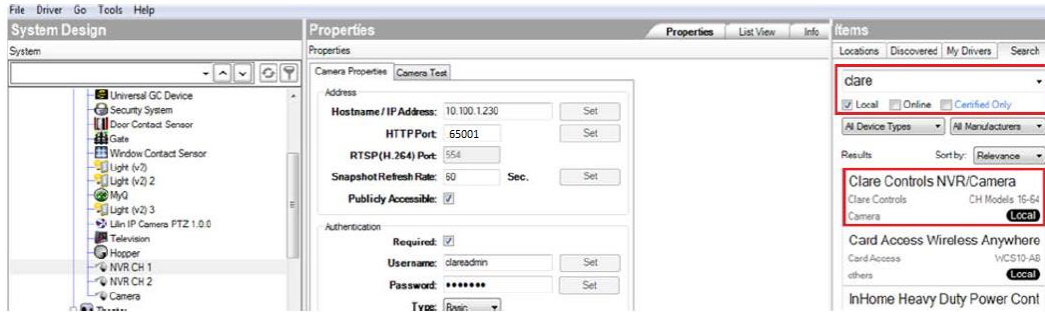
4. The **Select c4i file to add...** dialog displays.



5. Browse to the location on your computer where the driver was saved. For example, your desktop or documents folder. Then, click **Open**.

You are returned to the Composer home window.

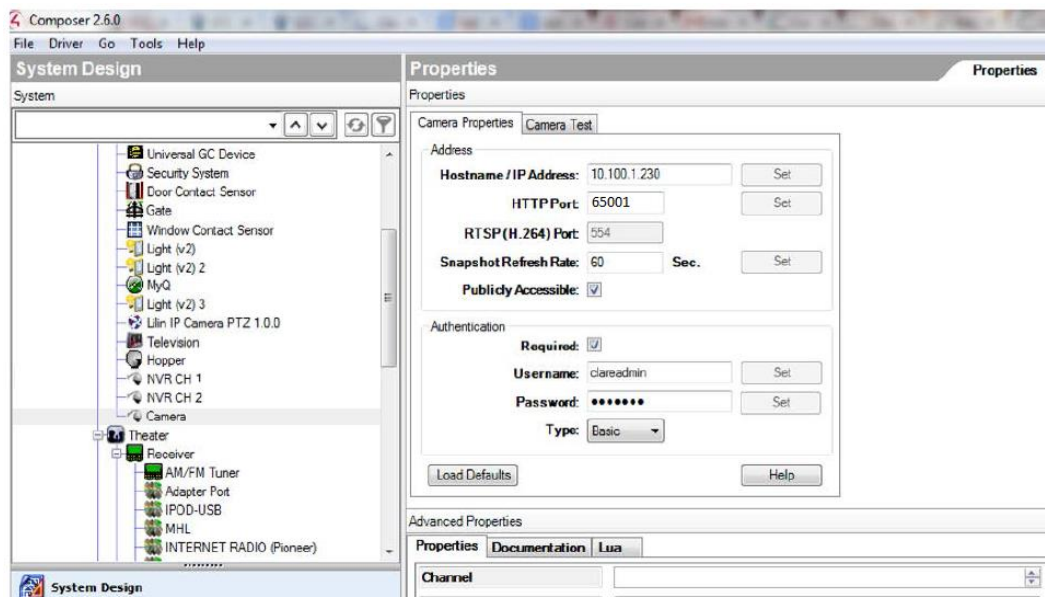
6. On the far right of the home window, click the **Search** tab in the Items pane.



7. Select the **Local** checkbox, and then type **clare** in the search bar.
The search results will auto-populate as shown in the following figure.
8. Double-click the **ClareVision NVR/Camera** selection to add an NVR or camera.
Note: You must add each camera that connects to the NVR individually. For example, if there are four cameras connected to the ClareVision NVR, then you must select **ClareVision NVR/Camera** four times.

To configure the NVR cameras:

1. In the Control4 Composer home window, the **System Design** and **Properties** panes display.



2. In the **System Design** pane, select the first camera.

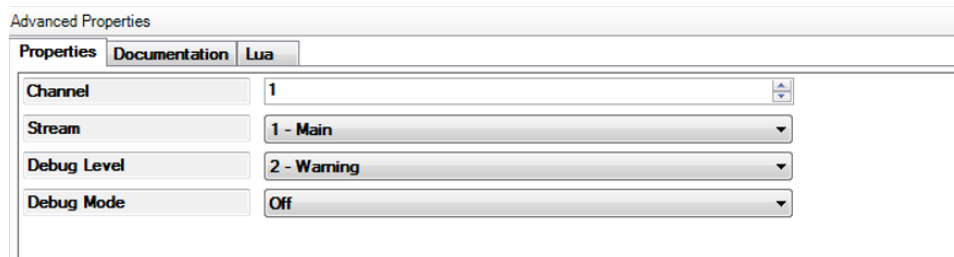
3. In the **Properties** pane, click the **Camera Properties** tab that you added earlier, and then configure the **Address** field to match the camera's address.

Note: Select the **Publicly Accessible** checkbox to enable remote access.

4. Configure the **Authentication** field.

Notes

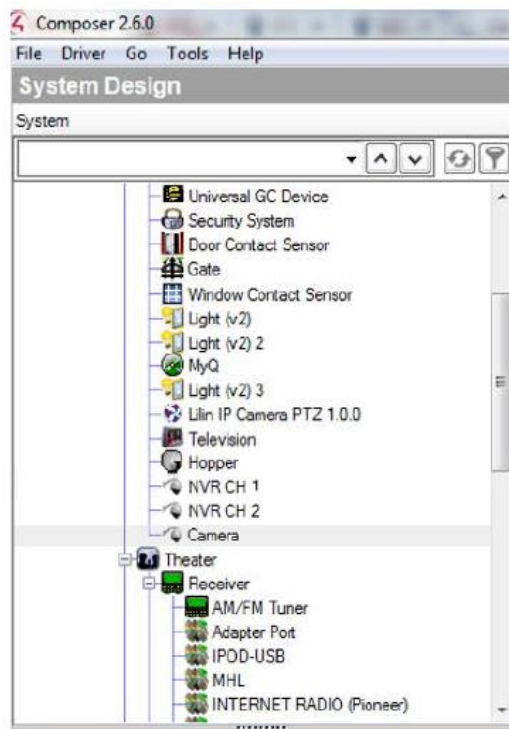
- Select the **Required** checkbox to enable a Username and Password for the camera.
 - The default username is clareadmin; the default password is secure7.
5. Scroll down to view the **Advanced Properties** pane, below the **Properties** pane.



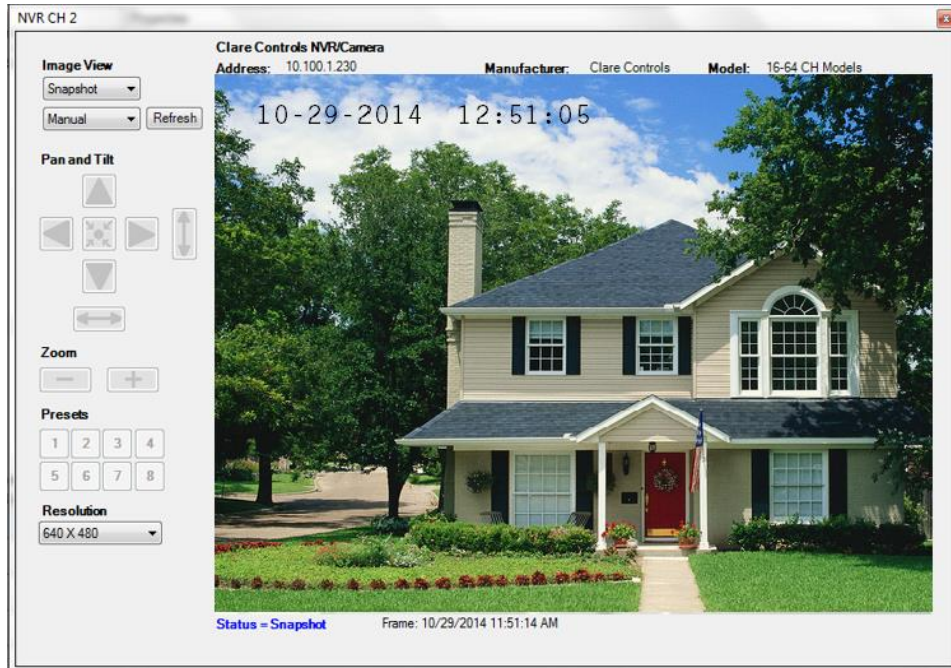
6. Select the camera channel from the **Channel** drop-down.

Note: You must complete steps 1 through 6 for each camera.

7. Scroll to view the System Design pane.



8. Double-click the device to display a snapshot.



9. When you are done configuring your devices, close the Composer software.

Contact information

Clare Controls, LLC.
7519 Pennsylvania Ave, Suite 104
Sarasota, FL 34243

General: 941.328.3991
Fax: 941.870.9646
www.clarecontrols.com

Integrator/Dealer Support: 941.404.1072
claresupport@clarecontrols.com

Homeowner Support (ClareCare): 941.315.2273 (CARE)
help@clarecontrols.com